



HEE e-learning for healthcare (e-LfH) programmes contribute to the revolution in UK medical and healthcare training by providing **FREE** 24/7 access to online, nationally quality-assured materials for all health and social care professionals, **INCLUDING PRIMARY CARE STAFF!**

HEE e-LfH is currently developing and delivering more than 210 e-learning programmes comprising more than 24,000 e-learning sessions.

REGISTER NOW
and access the
e-learning programmes
for **FREE**



e-learning sessions
launched on the Hub



registered users



e-learning sessions
available within
210+ programmes



Supporting Community Education
Provider Networks / Training Hubs in
Camden, Haringey, Islington and Newham



User information in

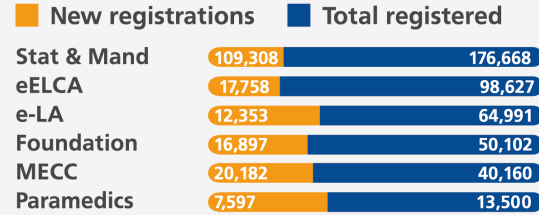
2018



Health Education England



User registration

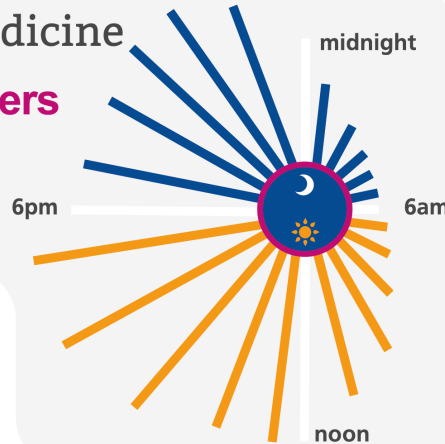


41 new programmes launched including...

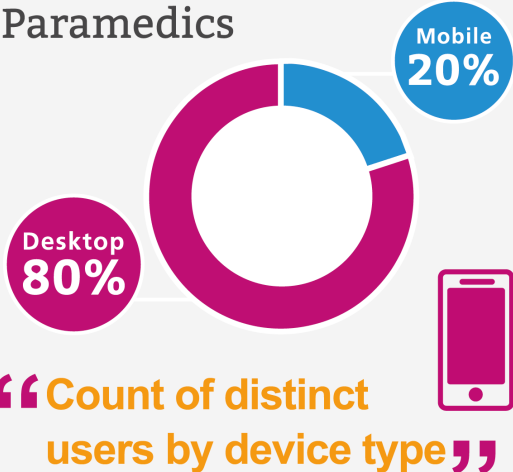


Access all hours – Acute Medicine

Distinct count of users accessing content by hour of day



Access anywhere – Paramedics

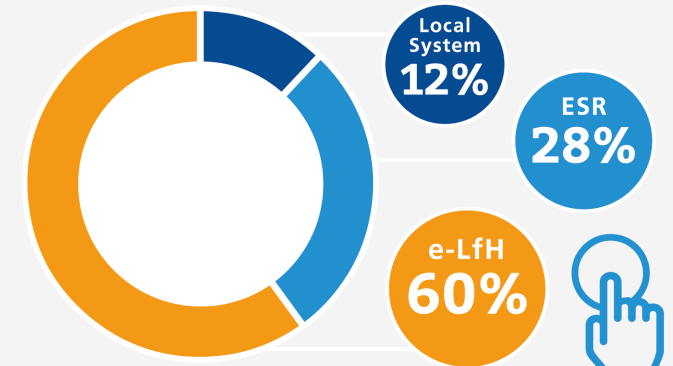


New users: 289,783 (e-LfH Hub only)

Sessions launched: 12,762,527

Developing people for health and healthcare

Launches by platform



HEE **e-LfH**
e-Learning for Healthcare
www.e-lfh.org.uk